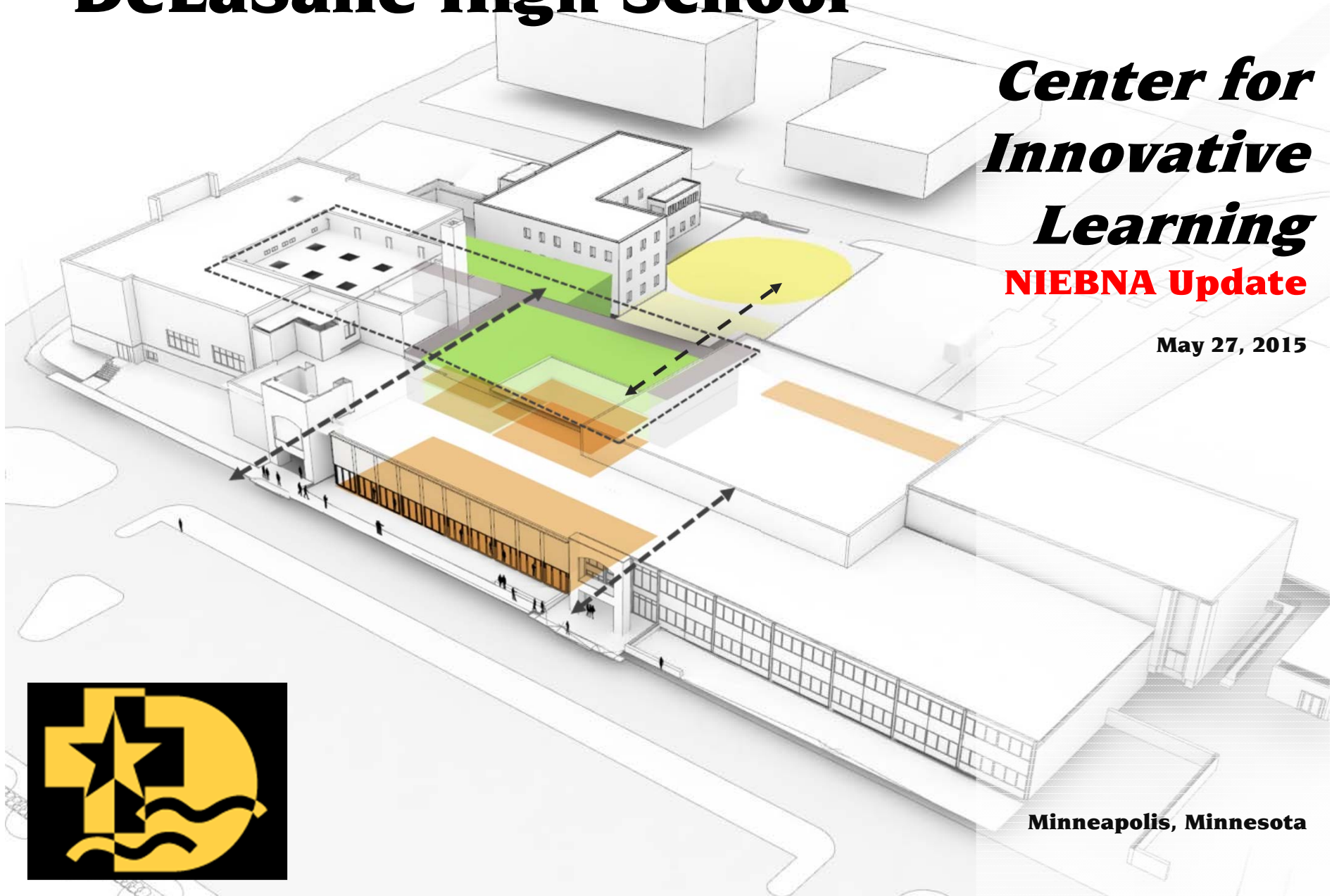


DeLaSalle High School

***Center for
Innovative
Learning***

NIEBNA Update

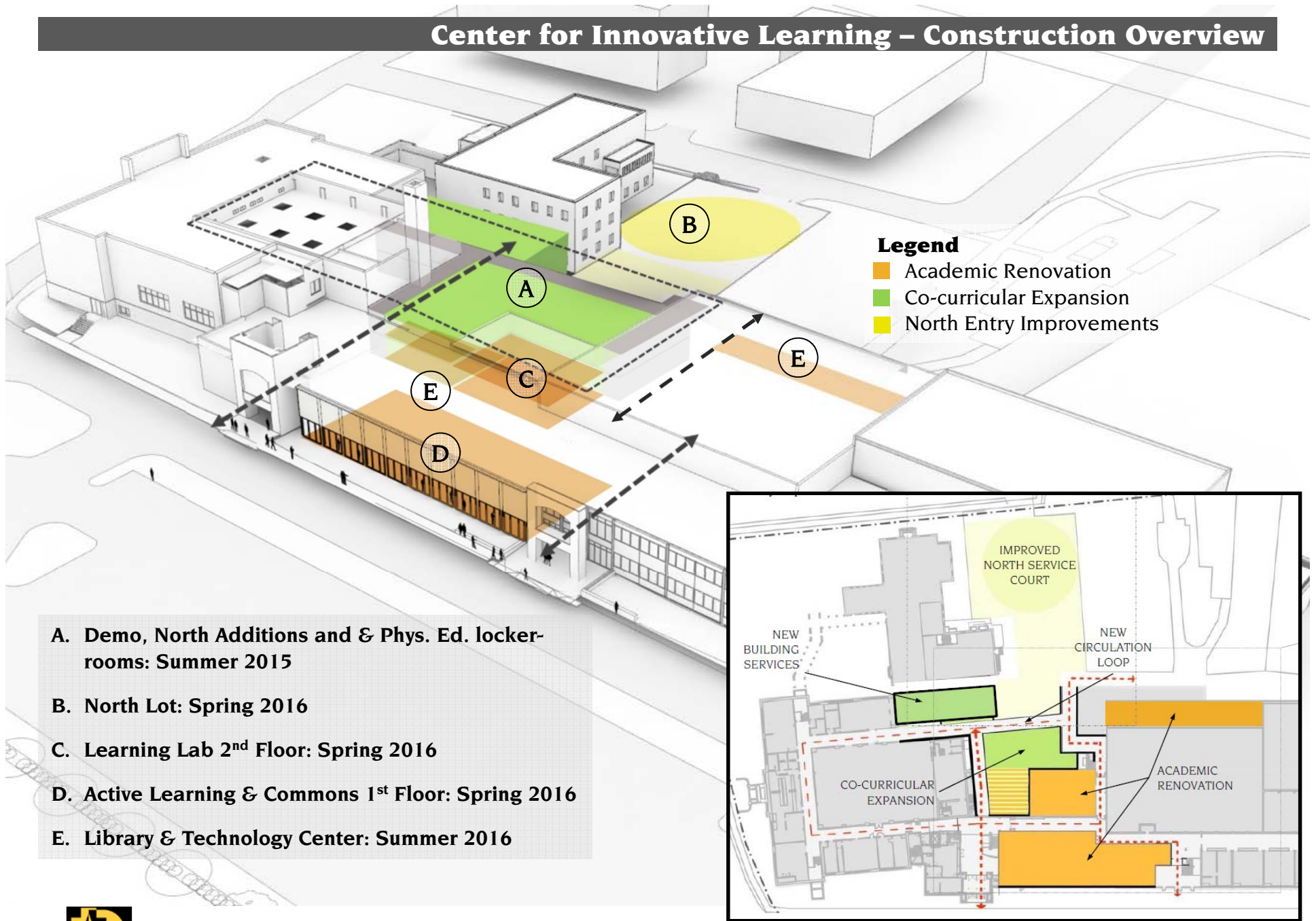
May 27, 2015

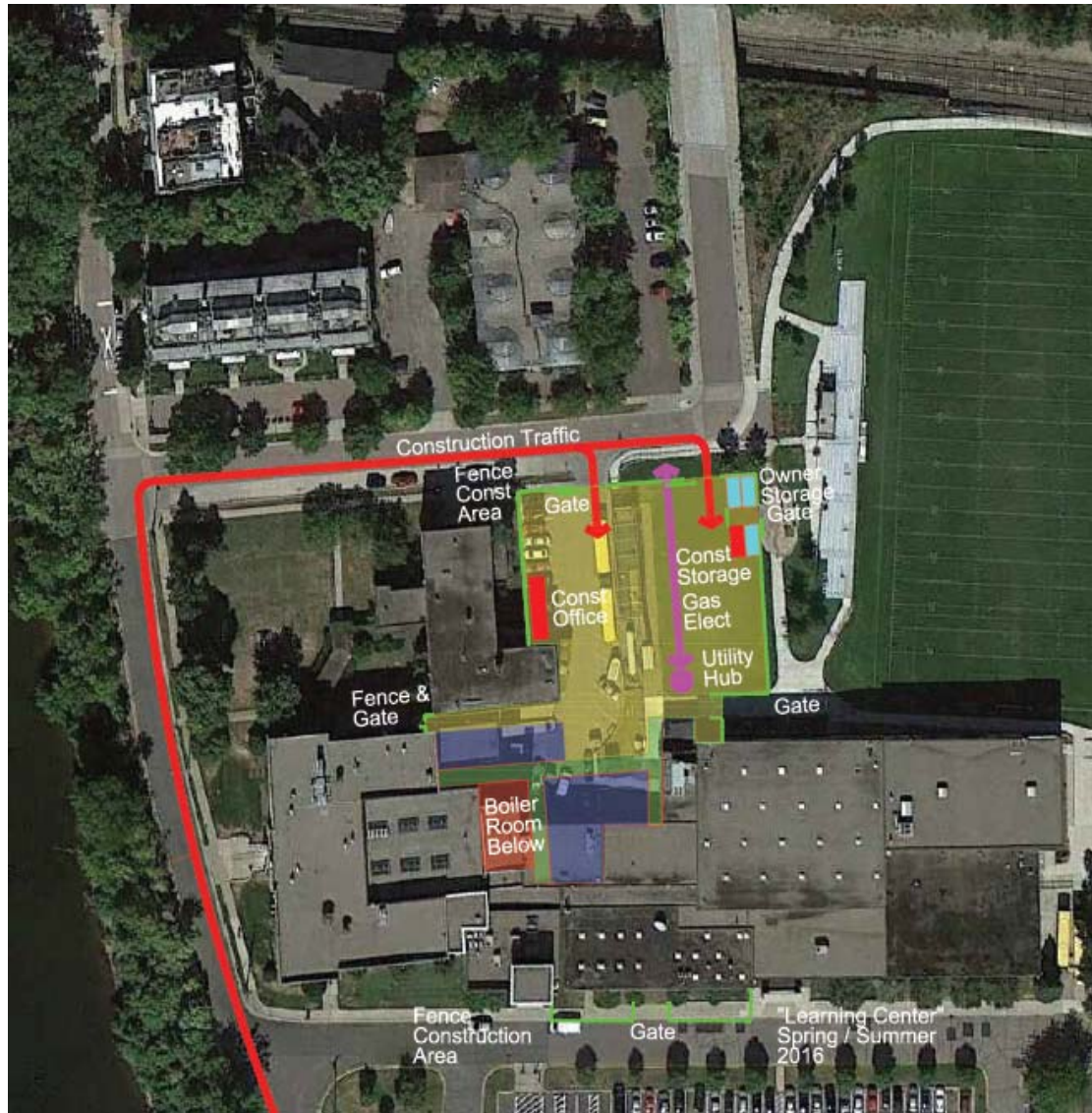


Minneapolis, Minnesota



Center for Innovative Learning – Construction Overview





Significant Construction Impact Dates

Week of 6/1/2015

- Temporary safety fencing goes up, construction & storage trailers
- Demolition starts (Back hoe & Dump Trucks)

Week of 6/22/2015

- Excavation starts (Back hoe & Dump Trucks)

Week of 6/29/2015

- Footings start (Forklift & Concrete Trucks)

Week of 7/27/2015

- Structural steel delivery starts (crane & flatbed trucks)

Week of 9/21/2015

- Precast starts to arrive (crane & flatbed trucks)

CIL Project Information Online

www.delasalle.com/cil

- Weekly construction reports
- Pictures and videos
- Complete up-to-date schedule
- Detailed project info

DeLaSalle's Contact Person

Nicholas Grue

612.676.7603

nicholas.grue@delasalle.com



Proposed South & North Façades



South



North

